



## Technical Rider

Indoor performance

For all ages

Duration: 1 hour

Set-up: the day before the performance (approximate: set-up 14h / set-down 2h)

Company personnel

- 5 performers

- 3 technicians: electrician, sound tech, and rigger

### Stage

o Minimum width: 10 meters

o Depth: 10 meters

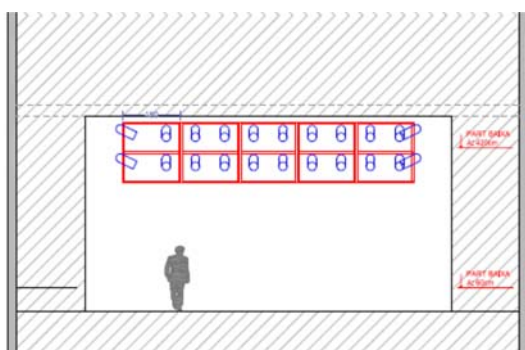
o Minimum height: 9 meters

o Floor: smooth, even, horizontal and sturdy surface, preferably made of wood

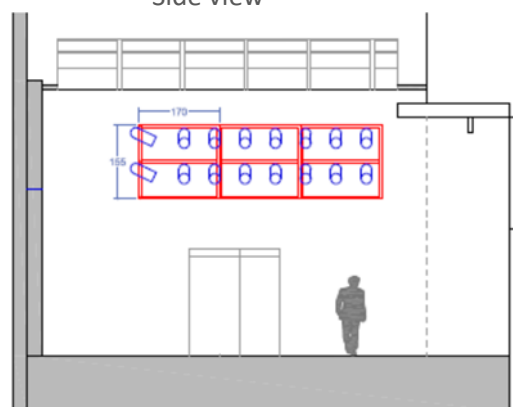
### Scenography

- o U-shaped iron structure, 155 cm high, 750 cm wide, and 510 cm deep
  - o Hanging from 4 chain motors, 1,000-kg (mobile during the performance)
  - o The spotlights will be hung from this structure
- o Material the company supplies
  - o Structure (certified)
  - o Slings to hang it with
  - o A linoleum mat, 6 by 6.4 meters
  - o Props
- o Materials we ask the theater to provide
  - o Access to the grid
  - o 4 chain motors, mobile, with a 1,000-kg capacity, that can be controlled remotely from the stage (so that the structure can be moved around during the performance)

Front view



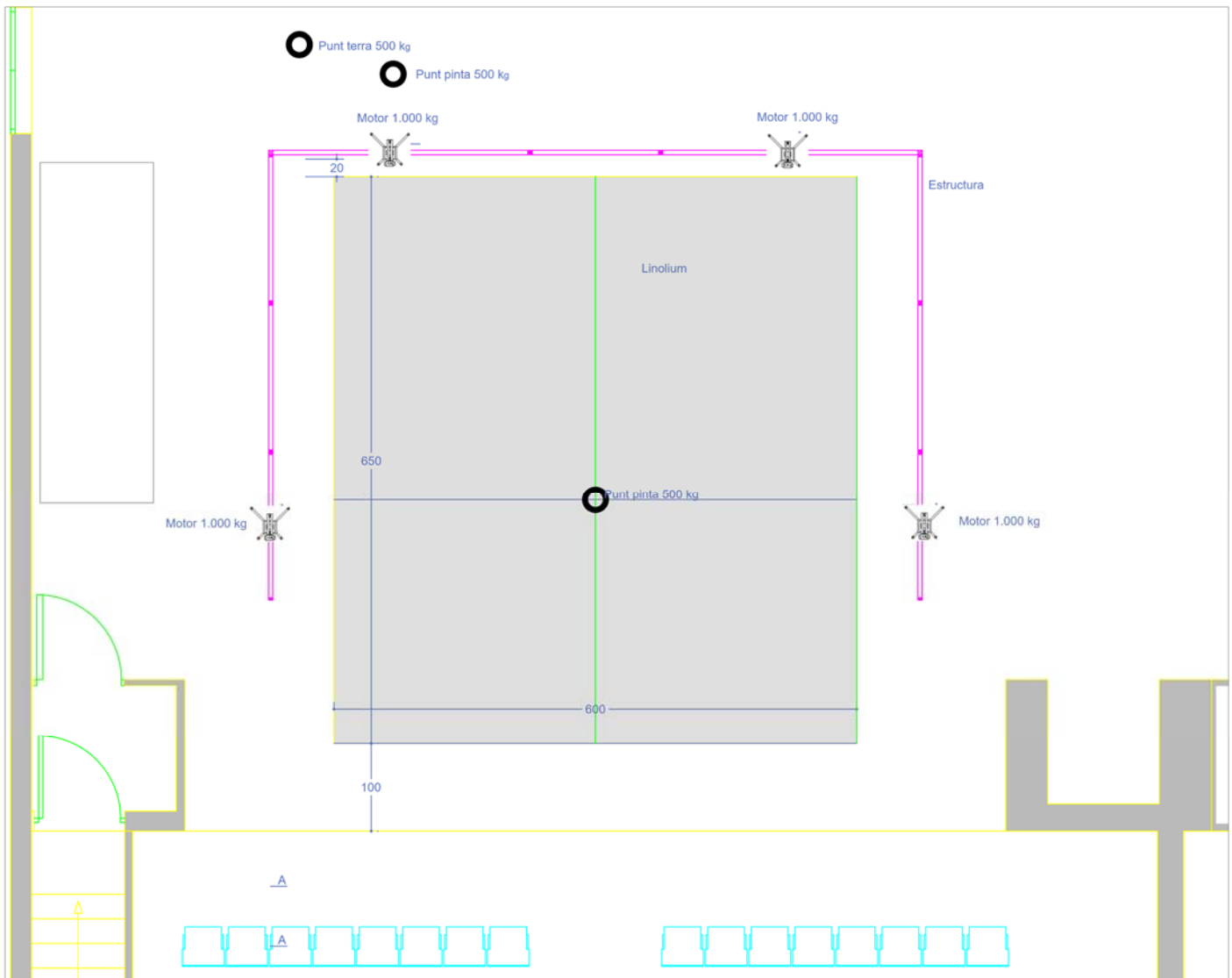
Side view





## Rigging

- 1 block and tackle in the center
  - 2 rigging points in the grid, with a WLL of 500 kg
  - 1 rigging point on the floor, with a WLL of 500 kg
- Material the company supplies
  - The necessary rigging equipment for anchoring and mounting the block and tackle
- Materials we ask the theater to provide
  - Access to the grid
  - 2 rigging points in the grid, with a WLL of 500 kg
  - 1 rigging point on the floor, with a WLL of 500 kg



## Machinery and masking

- We will set up German masking and a backdrop depending on how the props are set up

## Sound

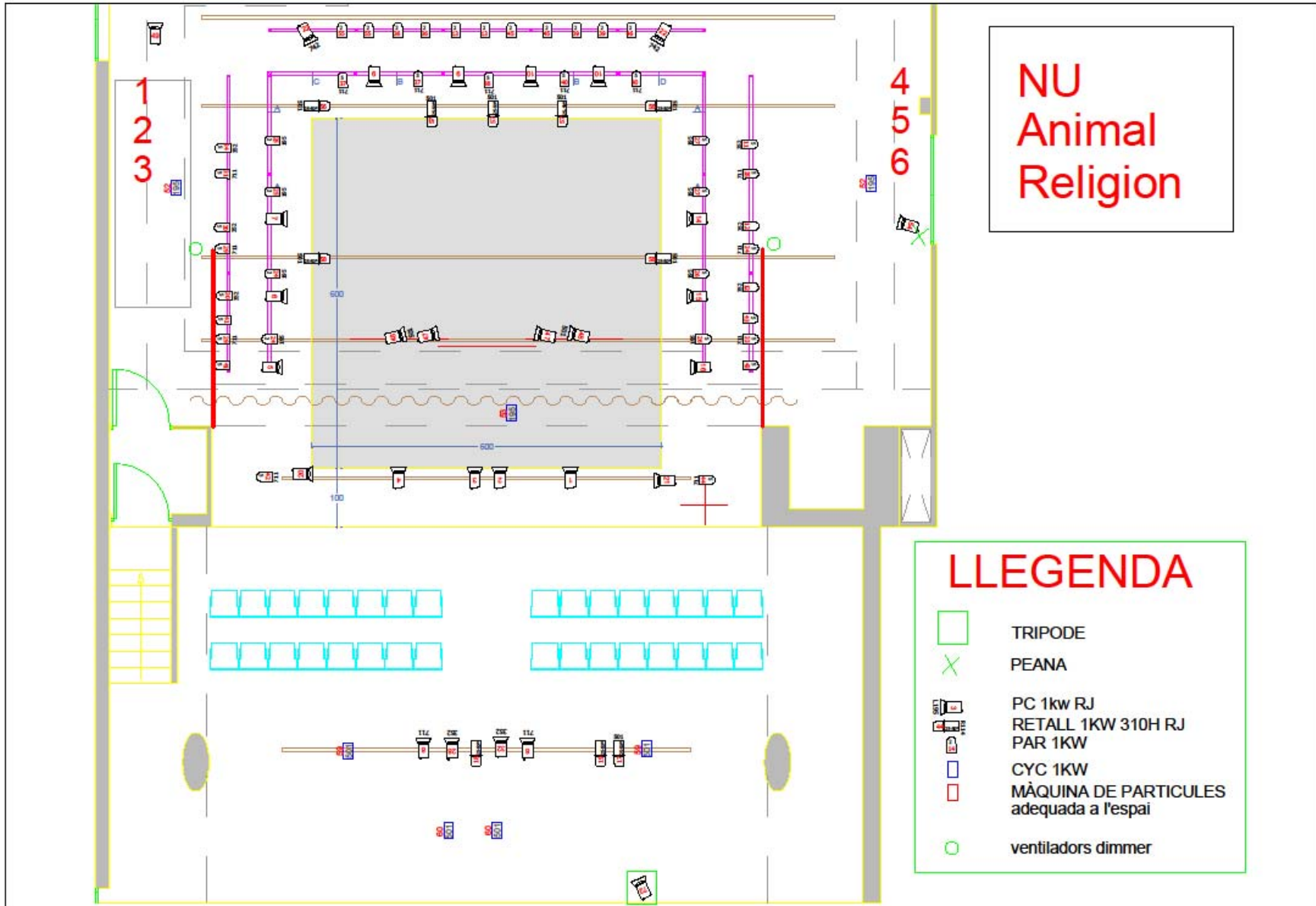
- Material the company supplies
  - 1 Shure SM58 microphone
  - 1 long, white XLR cable
  - 1 white microphone stand
  - Computer and sound card
- Materials we ask the theater to provide
  - Audio equipment that is suitable for the size of the theatre and provides even sound coverage for the entire audience
  - Extra speaker, to be placed behind the audience
  - 2 monitors on stage
  - Mixer / sound board
  - 3 DIs
  - 2 intercoms on the stage and 1 in the booth

## Lighting

Attached is a general lighting plan that reflects the set-up at the Ateneu Popular 9 Barris.

We can adapt it to the performance space as needed:

- Material the company supplies
  - Light board and DMX
  - Cables for lighting structure
  - 6 Socapex cables, 25 meters (with male and female connectors)
- Materials we ask the theater to provide
  - Spotlights for use during the show
  - Extra cables to reach the dimmer
  - Extra cables for the lighting structure
  - DMX at the board
  - Smoke machine (Antari HZ500 type or similar)
  - Platform for 1 spotlight on the ground
  - Any necessary dimmers



<b>LEGEND</b>
TRIPOD
PLATFORM FOR FLOOR SPOTLIGHT
PC, 1kW (RJ)
PROFILE, 1kW (RJ 310H)
PAR, 1kW
CYC, 1kW
SMOKE MACHINE
suitable for the space
fans, with a dimmer

## Load in, load out, and rehearsals

Lighting, audio, and scene set-up will be undertaken the day before the first performance. If for any reason this is not possible, don't hesitate to contact us so we can adapt to the situation.

## Other requirements

- Parking for 2 vans
- Dressing rooms with tables, chairs, an iron, bathrooms, and showers for 8 people
- Mineral water for 8 people during load in, performance, and load out

### **NOTE TO THE HEAD OF THE TECH CREW**

The show can be adapted to suit the space, so please don't hesitate to contact us. We ask that the tech crew provide confirmation that the theatre meets the equipment requirements.

### **Video and photos of the performance**

Short video (1 minute):

[https://www.youtube.com/watch?time\\_continue=9&v=nHGMjxmt0as](https://www.youtube.com/watch?time_continue=9&v=nHGMjxmt0as)

Long video:

<https://vimeo.com/312525877>

Password: Nu

### **CONTACT**

ATENEU POPULAR 9 BARRIS c/ Portlligat 11-15, 08042 Barcelona, Spain

Tel.: +34 93 353 95 16

<http://www.ateneu9b.net>

Guillem Pizarro

[produccio@ateneu9b.net](mailto:produccio@ateneu9b.net)

659 84 65 20