



## TECHNICAL SHEET

Indoor show

All audiences (recommended from 6 years old)

Duration: 60 min

Set-up: approximate assembly 12h / dismantling 2h (start of assembly preferably 1 day before the performance)

The company:

- artistic team: 5 people
- technical team: 3 people (lighting, sound and rigging technician)

### Stage area

o Width: 8 m



o Depth: 8 m

o Height: 6 m

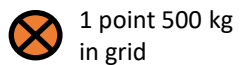
o Floor: no slope, smooth, hard, horizontal surface, preferably wood

## Rigging / Circus apparatus

The company brings all the necessary rigging material (truss, slings, cables, turnbuckles, connectors, etc) for the aerial circus apparatus.

Circus apparatus	Company material	Theatre requirements
<p>Smooth rope + hoist</p> 	<ul style="list-style-type: none"><li>• Smooth rope + hoist</li><li>• Ropes</li><li>• Pulleys + brakes</li><li>• Tensioners + cables</li></ul>	<ul style="list-style-type: none"><li>• Access to grid</li><li>• 1 point 500 kg CMU to grid</li><li>• 2 points of 500 kg CMU on side bridges (or wall in height)</li><li>• 1 point 500 kg CMU to floor (or wall)</li></ul>
<p>Fixed bar (2.50m high x 2.40m wide porch)</p> 	<ul style="list-style-type: none"><li>• fixed bar</li><li>• Tensioners + cables</li></ul>	<ul style="list-style-type: none"><li>• 4 x 500 kg CMU points on floor or wall</li></ul>

### Smooth rope + hoist



1 point 500 kg  
in grid



2 points 500 kg to  
side bridges or  
wall in height



hoist: 1 point 500  
kg on the floor or  
wall

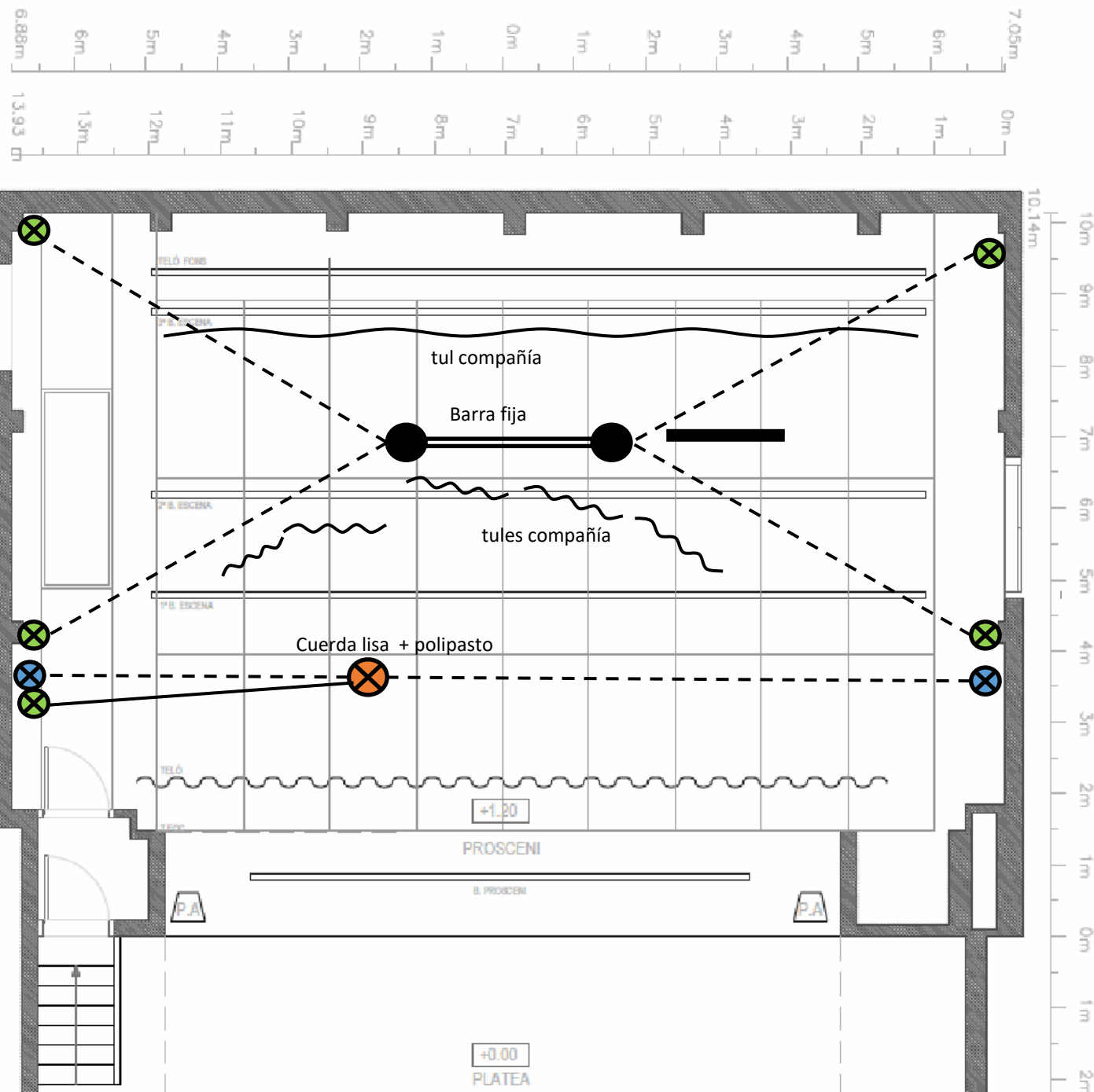
### Fixed bar



4 points 500 kg  
on floor or wall



company's tules



## Machinery and black chamber

### Company material

- Black tulle / backdrop
- Black tulle in different sizes

### Theatre requirements

- Hanging tulle / backdrop
- Hanging tulle on different (company) bars at mid-stage
- Camera black depending on spotlights and rigging points

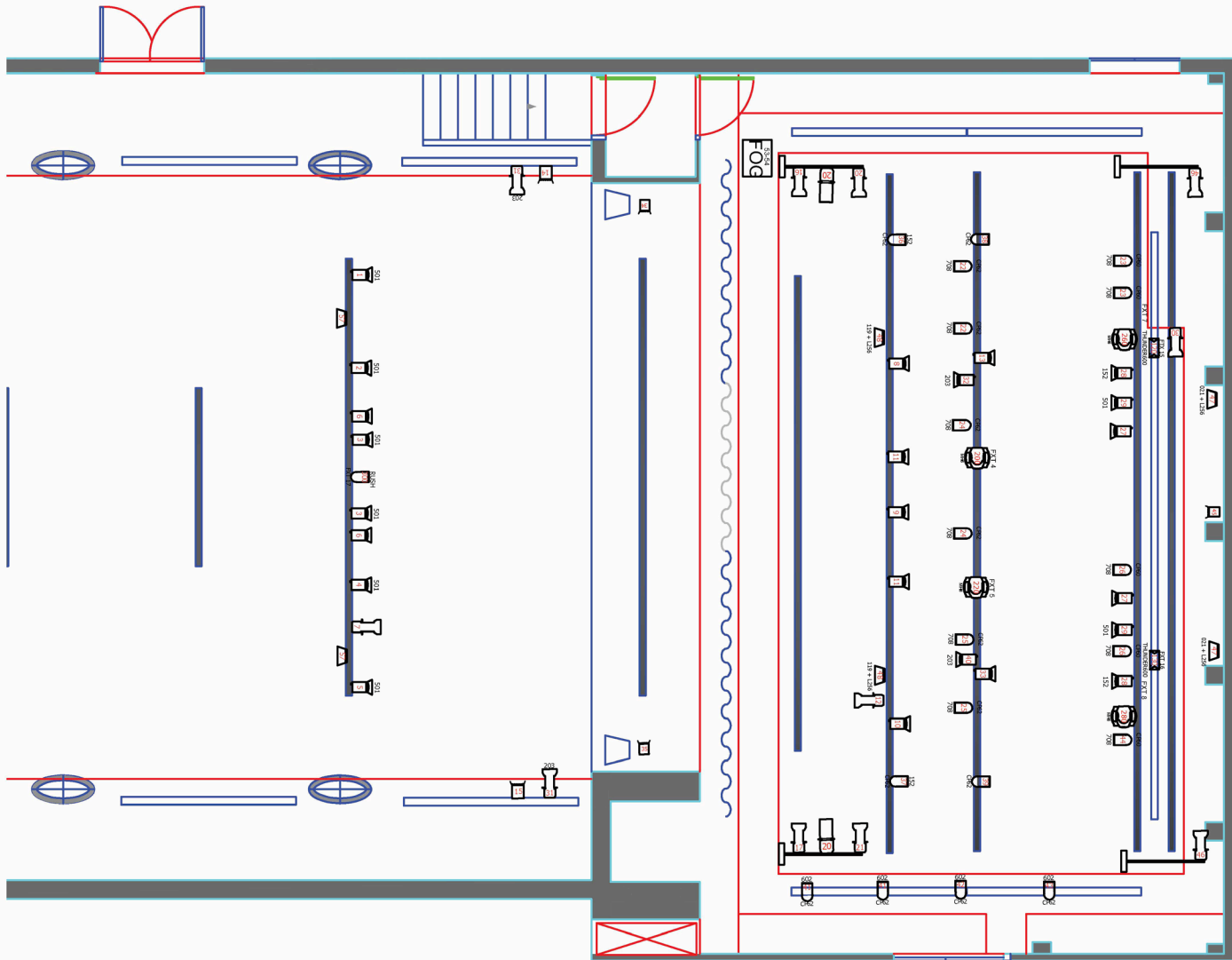


## Sound

### Theatre requirements

- Sound equipment sized to the characteristics of the room.
- Minimum 24 channels and 4 sends (preferably X32 or M32)
- 4 monitors on stage
- Microphones: 3 Sennheiser 604 or similar for toms
  - 2 AKG 419 or similar for bells
  - 1 Shure Beta 98C or similar for tuba
  - 1 DI for keyboard (mono)
  - 1 Rode NT5 or similar for crotales
  - 2 AKG 391 or similar for fixed bar structure
  - 2 Rode NTG2 or similar for front ambience
  - 1 hand-held wireless, with long microphone stand
  - 1 bassoon lavalier wireless
  - 1 headworn wireless for musician's rucksack
  - 1 Sennheiser accordion neck-worn wireless (mini TRS to TRS cable from the musician)
  - 1 Sennheiser wireless guitar headset (TRS)

## Lighting



## Theatre requirements

- Need for total darkness in the room
- 28 PC
- 13 profile spotlight
- 19 PAR
- 4 Panoramas
- Smoke machine
- 4 dancing feet
- 5 basesGuards
- LT Hydra2 table
- Consult with the company for adaptation of the lighting plan.

## Company material

- 4 Martin MH6
- 2 Thunder Wash
- Spirit Table (in case the theatre does not have the LT Hydra 2)



## Assembly, disassembly, testing, technical personnel

- Theatre technical staff: 2 lighting technicians, 2 machinists, 1 sound technician.
- Loading and unloading staff: not necessary in case the technical staff helps. It takes 30 minutes (LongMercedes Sprinter).
- We have the possibility to adapt the show to any space. Please do not hesitate to contact us.
- We ask the technical direction of the theatre to send the counter-rider, confirming the existence of the necessary material.

## Other requirements

- Parking for 2 vans
  - Long Mercedes sprinter with 3 technicians + scenography
  - Vw Transporter with 5 persons
- Dressing rooms with: tables, chairs, iron, toilets and showers for 8 people.
- Mineral water for 8 people, during set-up, performance and dismantling

## VIDEOS OF THE SHOW

Teaser (1 min):

<https://www.youtube.com/watch?v=x8v77FM6jFU>

Full show:

<https://www.youtube.com/watch?v=D9LG5rijFTw>

## CONTACT

ATENEU POPULAR 9 BARRIS c/Portlligat 11-15 - 08042 Barcelona

Tel.: +34 93 353 95 16 <http://www.ateneu9b.net>

Guillem Pizarro [produccio@ateneu9b.net](mailto:produccio@ateneu9b.net) 659 84 65 20